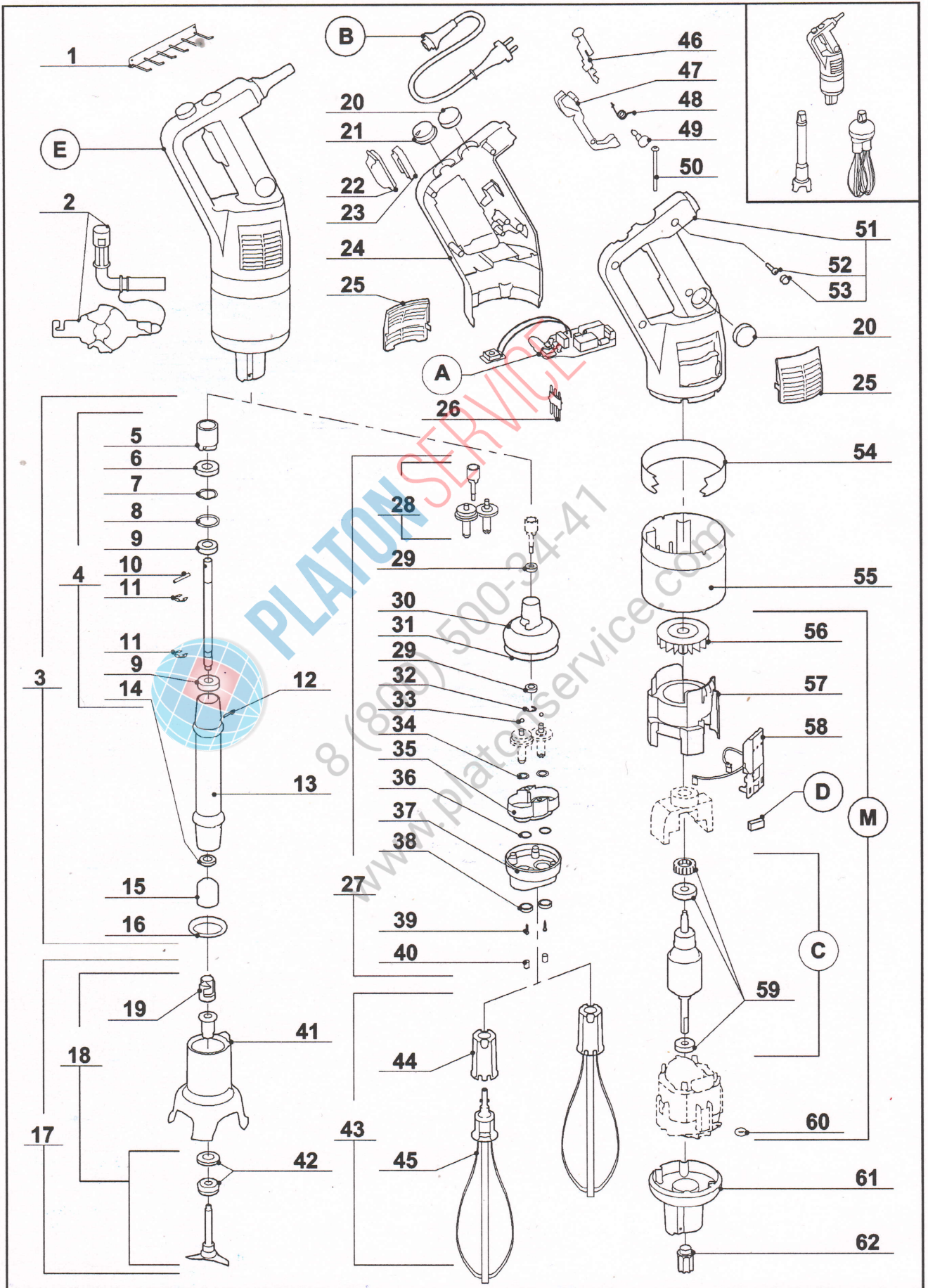


robot coupe®

CMP 250 Combi



Index	Pièce / Part	Désignation	Description
1	102 897	SUPPORT MURAL	RACK
2	29 540	ENS. OUTIL DE DEMONTAGE	TOOL ASSEMBLY
3	103 457	PIED CMP 250 Combi EQUIPE	FOOT
4	29 811	ENS. ARBRE D'ENTRAINEMENT CMP 250 C	DRIVING SHAFT CMP 250 C ASS
5	103 448	CAGE D'ENTRAINEMENT Combi	DRIVING CAGE
6	102 963	BUTEE ROULEMENT	STOP BEARING
7	203 118	RONDELLE ELASTIQUE D22	ELACTIC RING
8	507 075	JOINT TORIQUE Ø 21,6x2,4	SEAL
9	507 005	ROULEMENT DE PIED (608 2RS)	FOOT BEARING
10	203 080	GOUPILLE Ø 3x22	PIN
11	203 128	ANNEAU "E"	RING "E"
12	203 083	GOUPILLE Ø 3x28	PIN
13	103 458	PIED CMP 250 Combi	FOOT
14	507 004	JOINT A LEVRE (8x18x5)	SEAL
15	102 410	CAGE D'ENTRAINEMENT	DRIVING FRAME
16	102 417	JOINT DE PIED	FOOT SEAL
17	29 678	ENS. CLOCHE COMPLETE CMP	COMPLETE CMP BELL COVER ASSEMBLY
18	29 676	ENS. COUTEAU CMP	CMP BLADE ASSEMBLY
19	102 422	MOYEU D'ENTRAINEMENT	DRIVING HUB
20	29 940	ENS. CAPUCHON-BOUTON-CACHE VIS	CAP KNOB-CAP SCREW ASSEMBLY
21	29 941	ENS. BOUTON VARIATEUR EQU-CACHE VIS	VARIA SWITCH EQUIP-CAP SCREW ASSEMBLY
22	29 944	ENS. CAPUCHON LEVIER-CACHE VIS	CAP ARM-CAP SCREW ASSEMBLY
23	29 943	ENS. BAGUE MAINTIEN ETANCH-CACHE VIS	SEAL RING-CAP SCREW ASSEMBLY
24	29 939	ENS. ½ POIGNEE DROITE	RIGHT HANDLE ASSEMBLY
25	103 811	GRILLE	VENT COVER
26	29 945	ENS. CONNECTEUR-CACHE VIS	CONNECTOR-CAP SCREW ASSEMBLY
27	103 544	BOITE FOUET	BOX WHIP
28	29 801	ENS. PIGNONS FW+BAGUE	GEARS ASSEMBLY FW+RING
29	29 726	ENS. ROULEMENT-CACHE-VIS BOITE FOUET	BEARING-CAP SCREW WHIP BOX ASS
30	29 981	ENS. COQUE SUP. FW	UPPER BODY ASSEMBLY FW
31	29 727	ENS. JOINT TORIQUE Ø 96,97x1,78-CACHE VIS	SEAL-CAP SCREW ASSEMBLY
32	29 728	ENS. ANNEAU "E"-CACHE VIS	RING "E"-CAP SCREW ASSEMBLY
33	29 729	ENS. BILLE Ø 5-CACHE VIS	BALL-CAP SCREW ASSEMBLY
34	29 730	ENS. RONDELLE D'USURE FW-CACHE VIS	WEARING RING-CAP SCREW ASSEMBLY
35	29 982	ENS. FLASQUE+VIS+CACHE-VIS CMP	PLATE ASSEMBLY+SCREW+CAP SCREW CMP
36	29 962	ENS. JOINT TORIQUE 26x2 CMP	SEAL ASSEMBLY 26X2 CMP
37	29 554	ENS. COQUE INF. FW	LOWER BODY ASSEMBLY FW
38	29 731	ENS. JOINT A LEVRE (14-24-6)-CACHE VIS	SEAL-CAP SCREW ASSEMBLY
39	29 732	ENS. VIS 3x19-CACHE VIS BOITE FOUET	SCREW 3x19-CAP SCREW WHIP BOX ASSEMBLY
40	29 734	ENS. CACHE VIS BOITE FOUET	SCREW COVER WHIP BOX ASS
41	29 677	ENS. CLOCHE-BAGUE CMP	BELL COVER ASSEMBLY-RING CMP
42	507 000	GARNITURE D'ETANCHEITE	SEAL RING
43	103 545	FOUET	WHIP
44	102 740	EJECTEUR FOUET	EJECTOR WHIP
45	103 546	BRINS PLATS	FLAT STRANDS
46	29 946	ENS. BOUTON DE SECURITE-RESSORT	SECURITY KNOB-SPRING ASSEMBLY
47	29 947	ENS. LEVIER DE COMMANDE-CACHE VIS	COMMAND ARM-CAP SCREW ASSEMBLY
48	29 948	ENS. RESSORT DE RAPPEL-CACHE VIS	ADJUSTING SPRING-CAP SCREW ASSEMBLY
49	29 949	ENS. BOUTON VERROUILLAGE-RESSORT	LOCK KNOB ASSEMBLY-RING
50	203 127	VIS M4x95	SCREW
51	29 950	ENS. ½ POIGNEE G (CAPOT)+VIS+CACHE	L HANDLE (COVER)+SCREW+CAP ASSEMBLY
52	29 951	ENS. VIS 3x19-CACHE VIS POIGNEE	SCREW-CAP SCREW ASSEMBLY
53	29 952	ENS. CACHE VIS	CAP ASSEMBLY
54	103 441	VIROLE CMP 250 Combi	FERRULE
55	103 812	VIROLE MOTEUR	MOTOR FERRULE